

MARCH 2022

HEALTH PROTOCOL



PROTECTING YOURSELF | PROTECTING OTHERS | SECURING THE BUILDING | REASSURING OUR AUDIENCES

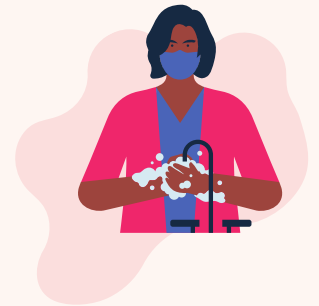
HEALTH PRECAUTIONS



- Implementation of a **systematic control** system for the **health pass & the vaccination pass**
- **Defined circulation paths** in common areas of the building (adapted according to events).

HYGIENE

- **Health protocol** for cleaning and disinfecting areas established in accordance with current standards and in compliance with environmental standards.
- **100% fresh air supply** with filtration throughout the building.
- Reinforced hygiene measures with **disinfection of contact points**.



PREVENTIVE MEASURES



- **WEARING A MASK**
 - **Recommended** when the control of the vaccination pass is **active** (public opening).
 - **Compulsory** when the control of the vaccination pass is **inactive** (no public opening, assembly & dismantling).
- **Hand-sanitiser** is available at building **entrances and exits**.
- More distribution by the organizer inside the event.
- **Social-distancing rules** to be displayed and compliance required.
- Appointment of a COVID-19 officer to serve as point of contact.

CATERING

- **Catering outdoors and indoors allowed** without capacity restriction.
- **Authorised cocktail**.
- **Adapted service mode** for products to be shared.



In order to provide the best possible sanitary conditions for welcoming visitors, Lille Grand Palais has signed the "Clean & Safe" Charter co-drafted by Hello Lille and the Institut Pasteur in Lille and undertakes to follow its recommendations. In addition to this protocol, Lille Grand Palais asks its visitors to act responsibly with regard to compliance and application of preventive measures and to refrain from attending events should their state of health prevent it.